

2017/Canature pressure tanks

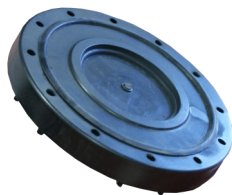
| Part number | Products | Size | Volume liter | Diameter mm |
|-------------|--------------------------------|----------------|--------------|-------------|
| CA-PV004-T | PE pressure tank, with base | 5 x 17 x 2.5" | 3.81 | 122 |
| CA-PV005-T | PE pressure tank, with base | 5 x 20 x 2.5" | 4.5 | 122 |
| CA-PV006-T | PE pressure tank, without base | 7 x 13 x 2.5" | 6.3 | 181 |
| CA-PV007-T | PE pressure tank, without base | 6 x 13 x 2.5" | 4.6 | 155 |
| CA-PV012-T | PE pressure tank, without base | 8 x 17 x 2.5" | 10.5 | 205 |
| CA-PV014-T | PE pressure tank, without base | 8 x 35 x 2.5" | 23.6 | 205 |
| CA-PV020-T | PE pressure tank, without base | 8 x 44 x 2.5" | 31.3 | 205 |
| CA-PV019-T | PE pressure tank, without base | 9 x 35 x 2.5" | 31.6 | 232 |
| CA-PV022-T | PE pressure tank, without base | 10 x 17 x 2.5" | 16.5 | 258 |
| CA-PV024-T | PE pressure tank, without base | 10 x 35 x 2.5" | 38.3 | 258 |
| CA-PV030-T | PE pressure tank, with base | 7 x 17 x 2.5" | 8.5 | 181 |
| CA-PV032-T | PE pressure tank, with base | 7 x 35 x 2.5" | 19.1 | 181 |
| CA-PV035-T | PE pressure tank, with base | 8 x 17 x 2.5" | 10.5 | 205 |
| CA-PV037-T | PE pressure tank, with base | 8 x 35 x 2.5" | 23.6 | 205 |
| CA-PV038-T | PE pressure tank, with base | 8 x 44 x 2.5" | 31.3 | 205 |
| CA-PV042-T | PE pressure tank, with base | 9 x 35 x 2.5" | 31.6 | 232 |
| CA-PV047-T | PE pressure tank, with base | 10 x 17 x 2.5" | 16.5 | 258 |
| CA-PV048-T | PE pressure tank, with base | 10 x 35 x 2.5" | 38.3 | 258 |
| CA-PV049-T | PE pressure tank, with base | 10 x 44 x 2.5" | 48.8 | 258 |
| CA-PV050-T | PE pressure tank, with base | 10 x 54 x 2.5" | 61 | 258 |
| CA-PV053-T | PE pressure tank, with base | 12 x 48 x 2.5" | 78.54 | 307 |
| CA-PV057-T | PE pressure tank, with base | 13 x 54 x 2.5" | 105.7 | 335 |
| CA-PV190-T | PE pressure tank, with base | 14 x 65 x 2.5" | 148 | 366 |
| CA-PV192-T | PE pressure tank, with base | 16 x 65 x 2.5" | 188.6 | 411 |

Operating pressure: 150 psi (10,5 Bar)
 Operating temperature: 1-50°C
 Max vacuum: 140 mm Hg
 Mini exposed temperature: -30°C
 Cycle test: 250 000 times from 0-150 psi
 Burst test: 4 times max operating pressure (600psi)
 Certificate: NSF, TÜV

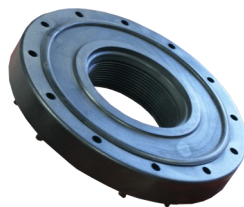


2017/Canature pressure tanks, accessories

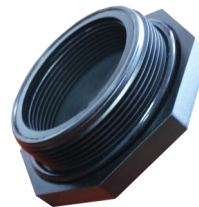
| Part number | Products | Size | Volume liter | Diameter mm |
|-------------|---|-------------------|--------------|-------------|
| CA-PV191-T | PE pressure tank, with base | 14 x 65 x 4" | 148 | 366 |
| CA-PV193-T | PE pressure tank, with base | 16 x 65 x 4" | 188.6 | 411 |
| CA-PV195-T | PE pressure tank, with base | 18 x 65 x 4" | 237 | 465 |
| CA-PV215-TB | PE pressure tank, top and bottom threaded openings, with base | 18 x 65 x 4" x 4" | 237 | 465 |
| CA-PV197-T | PE pressure tank, with base | 21 x 62 x 4" | 330 | 555 |
| CA-PV199-T | PE pressure tank, with base | 24 x 72 x 4" | 494 | 611 |
| CA-PV217-TB | PE pressure tank, top and bottom threaded openings, with base | 21 x 62 x 4" x 4" | 312 | 540 |
| CA-PV219-TB | PE pressure tank, top and bottom threaded openings, with base | 24 x 72 x 4" x 4" | 471 | 612 |
| CA-PV220-TB | PE pressure tank, top and bottom threaded openings, with base | 30 x 72 x 4" x 4" | 728 | 765 |
| CA-PV221-TB | PE pressure tank, top and bottom threaded openings, with base | 36 x 72 x 4" x 4" | 1023 | 918 |
| CA-PV272-TB | PE pressure tank, top and bottom flanged openings, with base | 36 x 72 x 6" x 6" | 1023 | 918 |
| CA-PV276-TB | PE pressure tank, top and bottom flanged openings, with base | 42 x 72 x 6" x 6" | 1389 | 1088 |
| CA-PV279-TB | PE pressure tank, top and bottom flanged openings, with base | 48 x 72 x 6" x 6" | 1743 | 1218 |
| CA-PV274-TB | PE pressure tank, top and bottom flanged openings, with base | 63 x 83 x 6" x 6" | 2580 | 1620 |



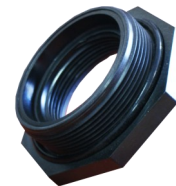
506-DT-4



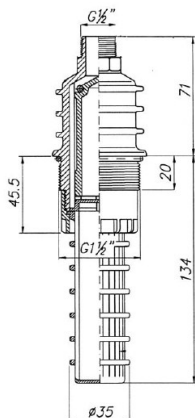
507-BJ-3



502-DT-2



504-BJ-1

Aeration and vacuum
breaker valve

| Part number | Products | Material |
|-------------|---|----------|
| 502-DT-2 | Plug 4" | ABS |
| 506-DT-4 | Closing flange 6" | ABS |
| 504-BJ-1 | Threaded converter 4"-2.5" | ABS |
| 507-BJ-3 | Flanged converter 6"-4" | ABS |
| WC-PV308 | Aeration and vacuum breaker valve | PP |
| MVCS-12 | Sampling tap 1/2" - for accredited sampling | |

